

**BIOLOGY – HALF YEARLY EXAMINATION**  
**HAMDARD PUBLIC SCHOOL**  
**CLASS – XI**

TIME: 2 Hours

Max. Marks: 70

**GENERAL INSTRUCTIONS**

1. All questions are compulsory.
2. Q. No. 1 – 8 are very short answer types carrying 1 mark each.
3. Q. No. 9 – 18 are short answer types carrying 2 marks each.
4. Q. No. 19 – 27 are of short answer type carrying 3 marks each.
5. Q. No. 28 – 30 are long answer type carrying 5 marks each.

**BIOLOGY**

**SECTION-A [1 MARK QUESTIONS]**

1. Name the phylum in which organisms have both exoskeleton as well as endoskeleton. *Echinodermata*
2. Which type of cells form antibodies in human blood? *wbc's or Leucocytes*
3. Name an annelid with open circulatory system. *Nereis*
4. Name two organism, which excrete by malpighian tubules?
5. Name the organisms which shows complete regeneration. *Many Platyhelminthes*
6. Write the full form of ICBN. *International Code of Botanical Nomenclature*
7. Write down the genetic material of TMV. *DNA*
8. Why is Deuteromycetes called fungi Imperfecti?

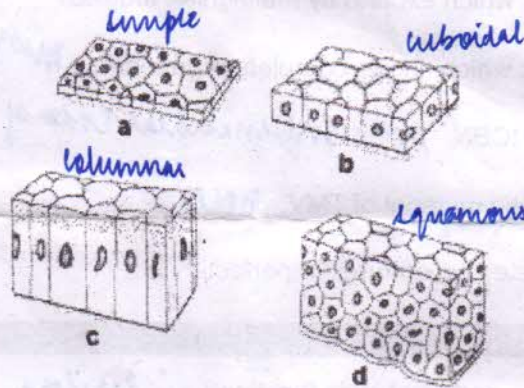
**SECTION-B [2 MARKS QUESTIONS]**

9. What is canal system and what is its function? *in Perifera*
10. Differentiate between simple epithelium and compound epithelium with examples.
11. Differentiate between myelinated and unmyelinated neurons with the help of a diagram.
12. What is transitional stratified epithelium and where is it found. *stomach; light dark bands (A) (Z)*
13. What is radula and in which phylum it is found. *Aschelminthes*
14. Why reproduction is not considered defining feature of life?
15. How taxonomy is different from systematic?
16. Write down important feature of Dinoflagellates.
17. What do you mean by naked DNA? *hepatine protine*
18. Name the Drosophila of plant kingdom. Identify its class.

- 19. Name 3 fundamental features of Chordates and Draw a well labelled diagram of a chordate animal showing these features.
- 20. Mention 3 distinguishing features of phylum Cnidaria.
- 21. What are Haversian lamellae? Where are these present and what is their function.
- 22. Explain the poison apparatus of a venomous snake and give 2 examples of poisonous snakes. *cobra, python*
- 23. Mention 6 important features of class mammalia.
- 24. Draw a well labeled diagram of bacteriophage.
- 25. Give detail taxonomic category of mango.
- 26. Write down the salient features of phycomycetes.
- 27. Draw a well labeled diagram of *Euglena*.

**SECTION - D [5 MARK QUESTIONS]**

- 28. Identify the following types of simple epithelium a, b, c and d and write their location and function.



- 29. Give detail account of five kingdom system of classification.
- 30. What are different living & non living being features of virus? Write down the different components of virus.

*enter the cell wall of the cell & into the DNA infect the cell & multiplies making more viruses.*

*Virus: acts as non living when not in any body.*

*R.H Whittaker*

*Viroids  
small  
devoid of proteins*